



DILE

equis·upholstered

Equis, a collection of operative chairs with a distinct identity and at the same time with a clear personality, specially emphasized by the arms that merge from the backrest.



Jorge Perini



equis upholstered



equis upholstered





equis upholstered



equis upholstered



equis upholstered



equis upholstered



Upholstered white high chair | S0000-01bb-xxyy

Reference	Base	Back upholstered	Wheels	Arms	Mechanism
S4400	black nylon	adjustable lumbar support	nylon/rubber	without arms	sliding system
S4401	polished aluminium	adjustable lumbar support	chrome/rubber	without arms	sliding system
S4402	white aluminium	adjustable lumbar support	chrome/rubber	without arms	sliding system
S4410	black nylon	adjustable lumbar support	nylon/rubber	fixed integrated in structure	sliding system
S4411	polished aluminium	adjustable lumbar support	chrome/rubber	fixed integrated in structure	sliding system
S4412	white aluminium	adjustable lumbar support	chrome/rubber	fixed integrated in structure	sliding system

Units 1 / Customer fabric 59 cm / Weight 16 Kg / Volume 0,20 m³

Upholstered black high chair | S0000-01bb-xxyy

Reference	Base	Back upholstered	Wheels	Arms	Mechanism
S4420	black nylon	adjustable lumbar support	nylon/rubber	without arms	sliding system
S4421	polished aluminium	adjustable lumbar support	chrome/rubber	without arms	sliding system
S4422	white aluminium	adjustable lumbar support	chrome/rubber	without arms	sliding system
S4430	black nylon	adjustable lumbar support	nylon/rubber	fixed integrated in structure	sliding system
S4431	polished aluminium	adjustable lumbar support	chrome/rubber	fixed integrated in structure	sliding system
S4432	white aluminium	adjustable lumbar support	chrome/rubber	fixed integrated in structure	sliding system

Units 1 / Customer fabric 59 cm / Weight 16 Kg / Volume 0,20 m³

Optional arms

Reference	BR02	BR23	BR03	BR04	BR09	BR10	BR25 (A)	BR24
Characteristics	1D	1D	3D	4D	4D	2D	4D	Fixed



Armrest can only be assembled in the chair option without fixed arms.

(A) Internal steel structure.



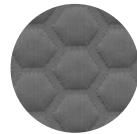
equis upholstered



SP1 / Sand



SP2 / Black



SP3 / Anthracite



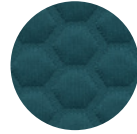
SP4 / Green



SP5 / Mustard



SP6 / Red



SP7 / Turquoise



SP8 / Sea Blue

Colour back (xx)	
SP1	Sand
SP2	Black
SP3	Anthracite
SP4	Green
SP5	Mustard
SP6	Red
SP7	Turquoise
SP8	Sea blue

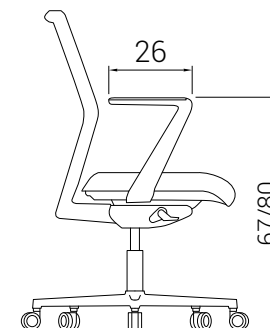
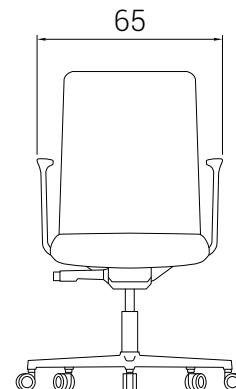
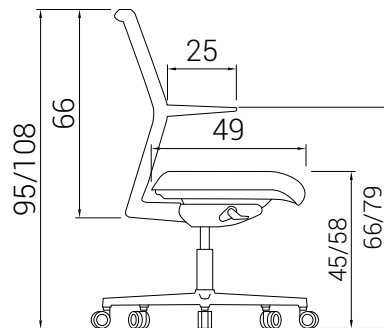
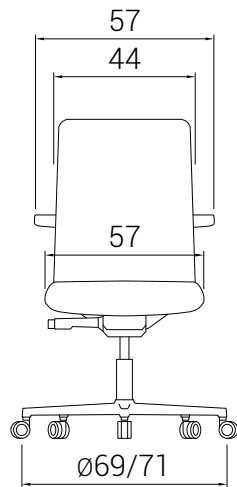
Accessories

Reference	Characteristics
S4500*	Black upholstery headrest is adjustable in height and depth
S4501*	White upholstery headrest is adjustable in height and depth

* The headrest must accompany a chair, it is not sold on its own. The upholstery can be different from the backrest.



Reference	Characteristics
A004	Semi-assembled chair delivery
A006	Assembled chair delivery



CERTIFICATES AND REGULATIONS

UNE EN 1335:2001 parts 1, 2 y 3
UNE EN 89401-01



upholstered·material·finishes

Group 01 BALI



exit
fabrics.

Tech data sheet

Composition

100% Polyolefin

Width 140 cm/ 54 in ± 2%

Resistance to abrasion

UNE-EN 14465:2004+A1:2007 Annex A to based on UNE-EN ISO 12947-2:1999/ AC:2006 + 90.000 (Martindale cycles)

Breaking strenght

UNE-EN ISO 13937-3:2001

Warp: 180 N / Weft: 160 N

Fastness to Rubbing

Dry: UNE-EN ISO 105-X12:2003 4/5

Wet: UNE-EN ISO 105-X12:2003 4/5

Coulour fastness to light

UNE-EN ISO 105-B02:2001 +A1:2002 Method 2 6/7 (grade 1-8; 8 best value). Suitable for outdoor

Pilling resistance

UNE-EN 14465:2004 - A1:2007, UNE-EN ISO 12945-2:2001 4/5

Inflammability

UK: BS 5825:2006 (cigarette)

UE: in 1021-1:2006 (cigarette)

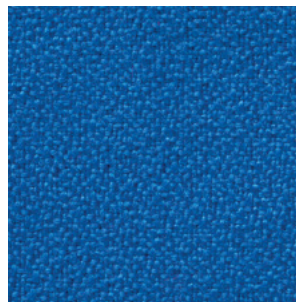
D: DIN 66084:2003-07 classification P- c

USA: CAL TB 117:2000 Section E, part 1(C.S. 191-53; CLASS 1)

NFPA 260:2009 Cover fabric CLASS 1

Buses: UNECE Regulation No. 118 Annex 6

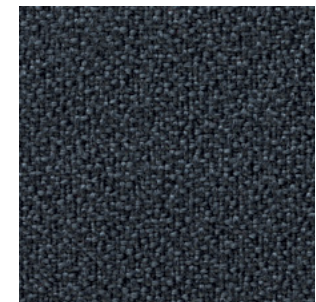
(Directive 95/28 Annex IV) Flammability performance is dependent on foam used.



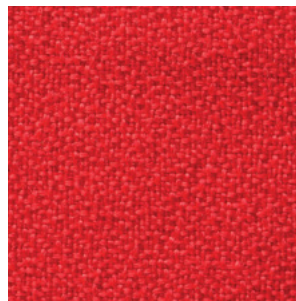
P6



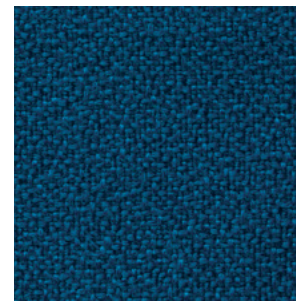
P8



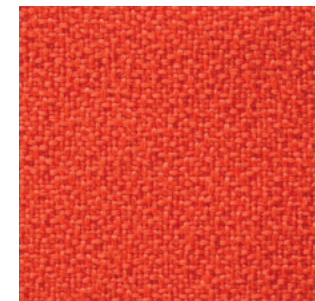
P20



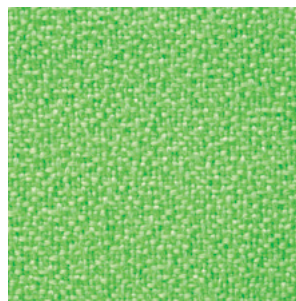
P21



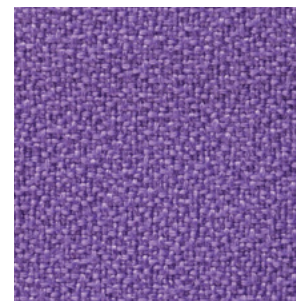
P22



P28



P29



P30



Cigarette
test



Don't use
bleach



Wash in dry



Antibacterial



Ecologic



Antistatic



Recyclable
100%



Suitable for
outdoor

Group 01 POLYESTER



exit
fabrics.

Tech data sheet

Composition

100% polyester

Width 140 cm/ 54 in \pm 2%

Resistance to abrasion

+ 80.000 (Martindale cycles) ISO 12947-2

Breaking strenght

UNE-EN ISO 13937-3:2001

Warp: 400 N / Weft: 260 N

Fastness to Rubbing

Dry: UNE-EN ISO 105-X12:2003 4/5

Wet: UNE-EN ISO 105-X12:2003 4/5

Coulour fastness to light

Value: 6 (Tolerance 5 to 8; 8 best value)

ISO 105-B02 (Xenotest)

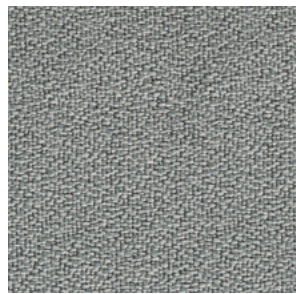
Pilling resistance

UNE-EN ISO 12945-2:2001 4/5

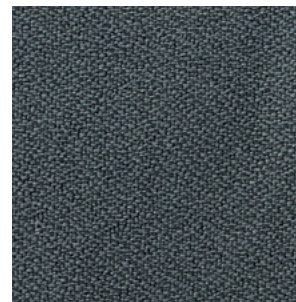
Inflammability

EN 1021-1 & 2

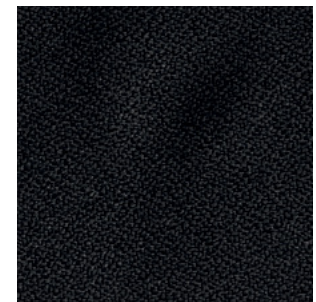
Will also pass other flammability standards. Flame retardant performance is dependent upon the foam used.



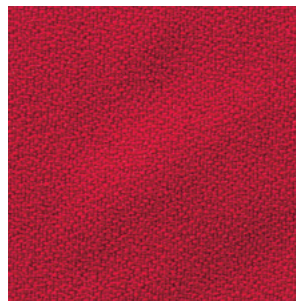
C1



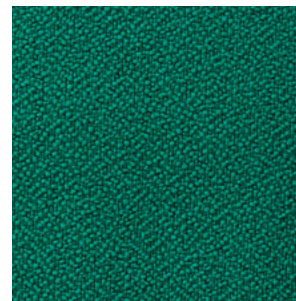
C2



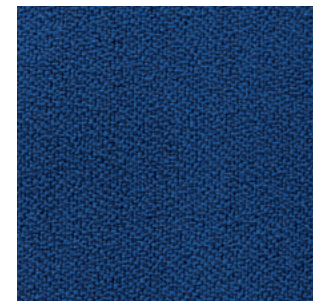
C5



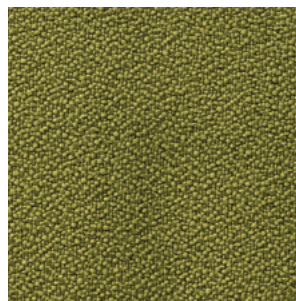
C7



C8



C10



C14



C17



Cigarette
test



Match test



Wash in dry



Avoid drying
in the sun



Don't use
bleach

Group 01 GOYA



exit
fabrics.

Tech data sheet

Composition 100%
Poliiolefina

Width
140 cm/ 54 in ± 2%

Resistance to abrasion
UNE-EN 14465:2004+A1:2007
Annex A to based on UNE-EN ISO 12947-2:1999/
AC:2006 90.000 (Martindale cycles)

Breaking strenght
UNE-EN ISO 13937-3:2001
Warp: 130 N / Weft: 100 N

Fastness to Rubbing
Dry: UNE-EN ISO 105-X12:2003 4/5
Wet: UNE-EN ISO 105-X12:2003 4/5

Coulour fastness to light
UNE-EN ISO 105-B02:2001 +A1:2002 Method 2 5/6
(grade 1-8; 8 best value). Suitable for outdoor

Pilling resistance
UNE-EN 14465:2004 +A1:2007, UNE-EN ISO 12945-
2:2001 4/5

Inflammability
UK: BS 5825:2006 (cigarette)
UE: in 1021-1:2006 (cigarette)
D: DIN 66084:2003-07 classification P- c
USA: CAL TB 117:2000 Section E, part 1
(C.S. 191-53; CLASS 1) NFPA 260:2009
Cover fabric CLASS 1
Buses: UNECE Regulation No. 118 Annex 6 (Directive
95/28 Annex IV) Flammability performance is
dependent on foam used.



Cigarette
test



Don't use
bleach



Wash in dry



Antibacterial



Ecologic



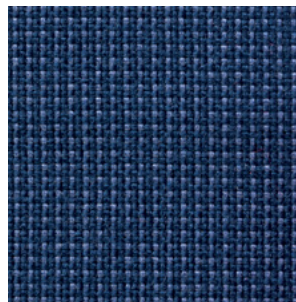
Antistatic



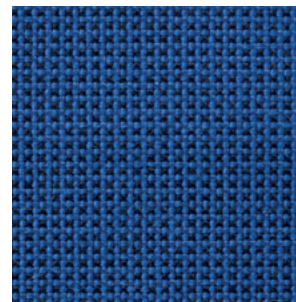
Recyclable
100%



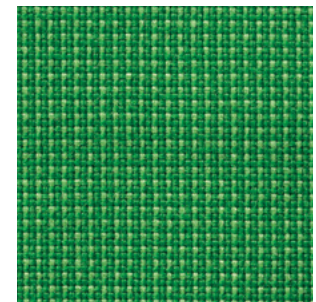
Suitable for
outdoor



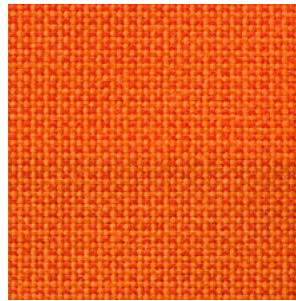
D1



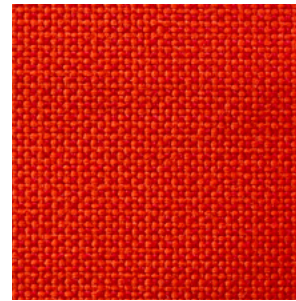
D3



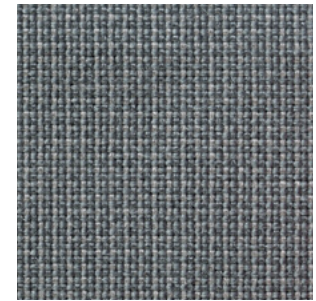
D6



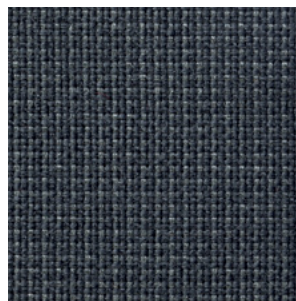
D8



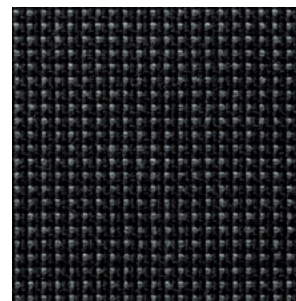
D9



D10



D11



D12

Group 01 TOUCH LEATHER



VERY IMPORTANT!
Not recommended for
installations, limited
domestic use only.



VERY IMPORTANT!

Light colors and white are
excluded from warranty due to
color transmission from external
fabrics (jeans, dyed clothes, etc.).



Tech data sheet

Composition

85 % Polyurethane (PU) - 15 % Cotton

Width 140 cm/ 54 in

Weight 570 g/m²

Thickness 1,00 - 1,10 mm

Resistance to abrasion

50.000 (Martindale cycles) ISO 1247-2:1998

Breaking strength

Warp: 3,18 kg. / Weft: 3,64 kg.

Tensile strength

Warp: 3,18 kg. / Weft: 3,64 kg.

Inflammability

UK: BS 5825:2006 (cigarette)

UE: in 1021-1:2006 (cigarette)

D: DIN 66084:2003-07 classification P- c

USA: CAL TB 117:2000 Section E, part 1

(C.S. 191-53;CLASS 1)

NFPA 260:2009 Cover fabric CLASS 1

Buses: UNECE Regulation No. 118 Annex 6

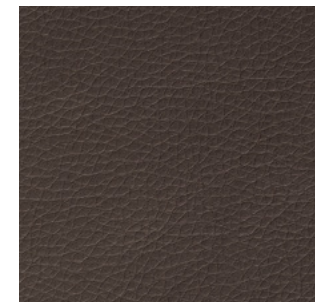
(Directive 95/28 Annex IV) Flammability
performance is dependent on foam used.



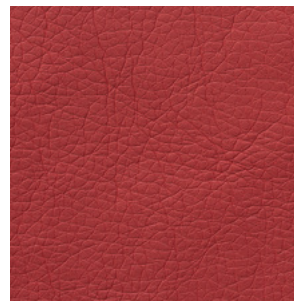
R1



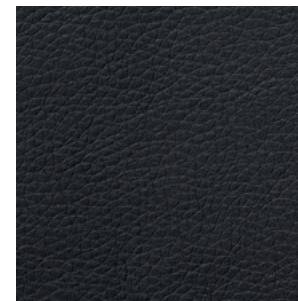
R2



R3



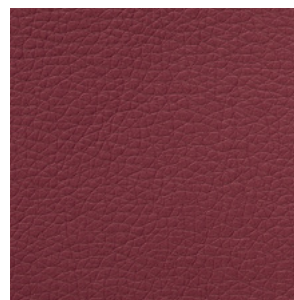
R4



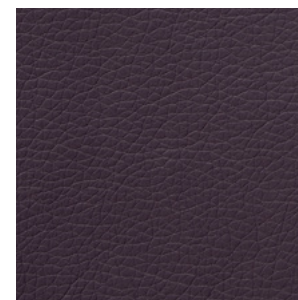
R5



R6



R7



R8



R9



Cigarette
test



Wash in dry



Wash with
wet cloth



Avoid drying
in the sun



Don't use
bleach

Group 01 COMBI



exit
fabrics.

Tech data sheet

Composition

100% Polyolefin

Width 140 cm/ 54 in \pm 2%

Resistance to abrasion

UNE-EN 14465:2004+A1:2007
Annex A to based on UNE-EN ISO 12947-2:1999/
AC:2006 +40.000 (Martindale cycles)

Breaking strenght

UNE-EN ISO 13937-3:2001
Warp:400 N / Weft: 260 N

Fastness to Rubbing

Dry: UNE-EN ISO 105-X12:2003 4/5
Wet: UNE-EN ISO 105-X12:2003 4/5

CouLOUR fastness to light

UNE-EN ISO 105-B02:2001 +A1:2002 Method 2 6/7
(grade 1-8; 8 best value). Suitable for outdoor

Pilling resistance

UNE-EN 14465:2004 +A1:2007,
UNE-EN ISO 12945-2:2001 4/5

Inflammability

UK: BS 5825:2006 (cigarette)
UE: in 1021-1:2006 (cigarette)
D: DIN 66084:2003-07 classification P- c
USA: CAL TB 117:2000 Section E, part 1(C.S. 191-53;
CLASS 1)
NFPA 260:2009 Cover fabric CLASS 1
Buses: UNECE Regulation No. 118 Annex 6 (Directive
95/28 Annex IV) Flammability performance is
dependent on foam used.



Cigarette
test



Don't use
bleach



Wash in dry



Antibacterial



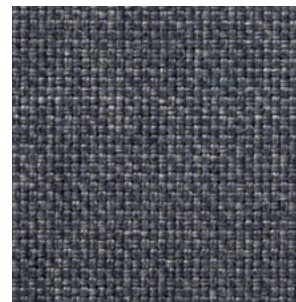
Ecologic



Recyclable
100%



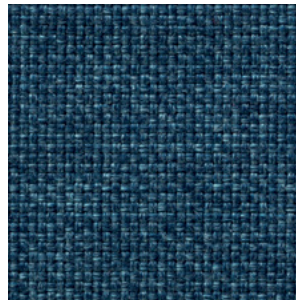
B1



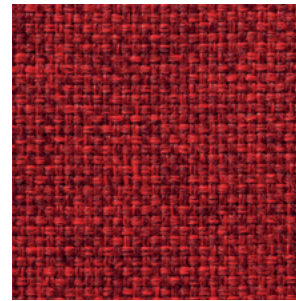
B2



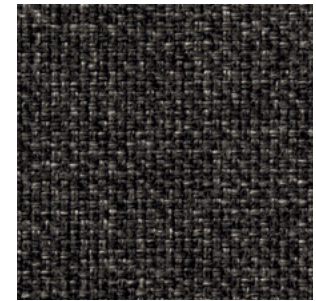
B3



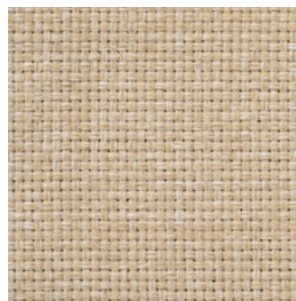
B4



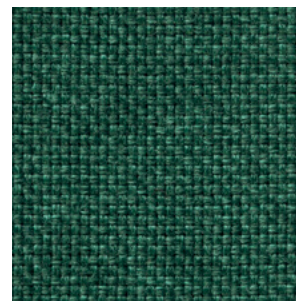
B5



B6



B7



B8

Group 02 OCEAN



exit
fabrics.

Tech data sheet

Composition

100% Polyester F.R.

Width 160 cm / ± 2%

Resistance to abrasion

UNE-EN 14465:2004+A1:2007
annex A based on UNE-EN ISO 12947-2: 1999/
AC:2006 + 100.000 (Martindale cycles)

Breaking strenght

UNE-EN ISO 13937-3:2001

Warp: 68 N / Weft: 73 N

Fastness to Rubbing

Dry: UNE-EN ISO 105-X12:2003 4/5

Wet: UNE-EN ISO 105-X12:2003 4/5

Couleur fastness to light

UNE-EN ISO 105-B02:2001 +A1:2002

Method 2 4/5 (grade 1-8; 8 best value)

Pilling resistance

UNE-EN 14465:2004 +A1:2007,

UNE-EN ISO 12945-2:2001 4/5

Inflammability

UK: BS 5852:2006 (cigarette and match);
BS 5852:2006 Crib 5; BS 7176:2007 Medium Hazard;
UE: in 1021-1:2006 (cigarette); in 1021-2:2006 (match);
D: DIN 4102-1:1998 class. B2; DIN 66084:2003
classification P-a; F: NF P 92-507:2004
classification M.1 NF 60-013:2006 (AM 18); ES:
UNE 23727-90 1R Classe M.1 ; I: UNI 9175:2010 Clase
1.IM; USA: CAL TB 117:2000 Section E, part 1(C.S.
191-53; CLASS 1); NFPA 260:2009 Cover fabric CLASS
1; Buses: UNECE Reg. No 118 App. 6; Marine: IMO
MSC.307 (88) Annex I Part 8; Aeronautical: FAR 25.853
a) App. F Part I Paragraph (a)(1)(ii) Flammability
performance depends on foam used.



Cigarette
test



Match test



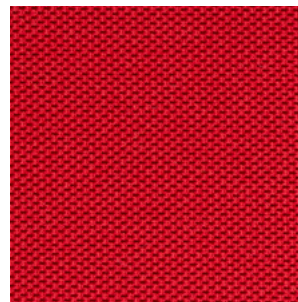
Wash in dry



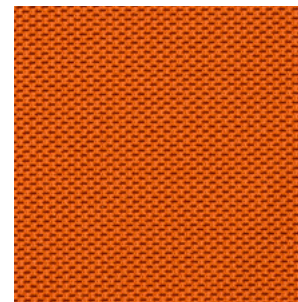
Avoid drying
in the sun



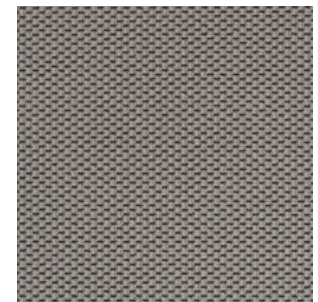
Don't use
bleach



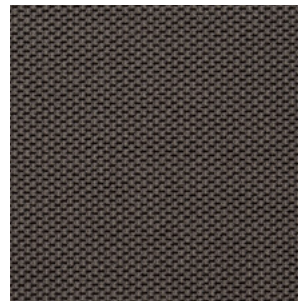
G2



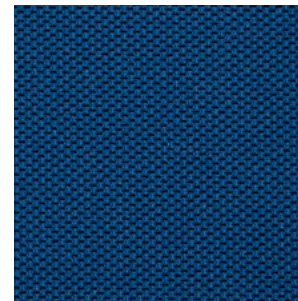
G3



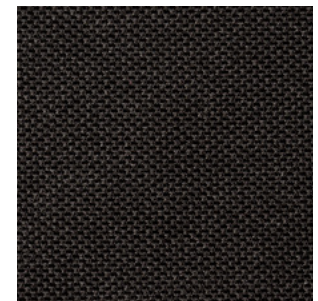
G4



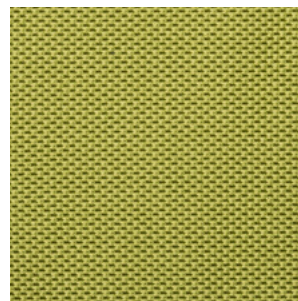
G5



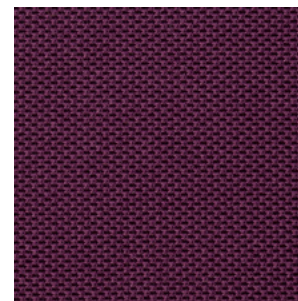
G7



G8



G10



G12

Group 02 ELASTIKA FR



exit
fabrics.

Tech data sheet

Composition

100% Poliester F.R.

Width 140 cm/ 54 in ±

Resistance to abrasion

UNE-EN 14465:2004+A1:2007

Annex A to based on UNE-EN ISO 12947-2:1999/

AC:2006 +100.000 (Martindale cycles)

Breaking strenght

UNE-EN ISO 13937-3:2001

Warp: 81 N / Weft: 66 N

Fastness to Rubbing

Dry: UNE-EN ISO 105-X12:2003 4

Wet: UNE-EN ISO 105-X12:2003 4

Coulour fastness to light

UNE-EN ISO 105-B02:2001 +A1:2002

Method 2 5/6 (grade 1-8; 8 best value)

Pilling resistance

UNE-EN 14465:2004 +A1:2007,

UNE-EN ISO 12945-2:2001 4/5

Inflammability

UK: BS 5852:2006 (cigarette and match);

BS 5852:2006 Crib 5; BS 7176:2007 Medium Hazard;

UE: in 1021-1:2006 (cigarette); in 1021-2:2006 (match);

D: DIN 4102- 1:1998 classification B2 DIN 66084:2003

classification P-a; F: NF P 92-507:2004 classification

M.1; NF 60-013:2006 (AM 18); ES: UNE 23727-90 1R

Classe M.1 ; I: UNI 9175:2010 Clase 1.IM; USA: CAL

TB 117:2000 Section E,part 1(C.S. 191-53; CLASS 1);

NFPA 260:2009 Cover fabric CLASS 1; Buses: UNECE

Regulation No 118 Appendix 6; Marine: IMO MSC.307

(88) Annex I Part 8 Aeronautical: FAR 25.853 a)

Appendice F Part I Paragraph (a)(1)(ii). Flammability

performance is depends on foam used.



Cigarette
test



Match test



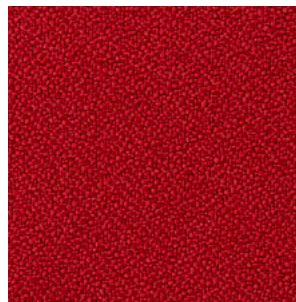
Wash in dry



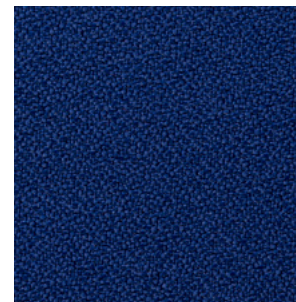
Avoid drying
in the sun



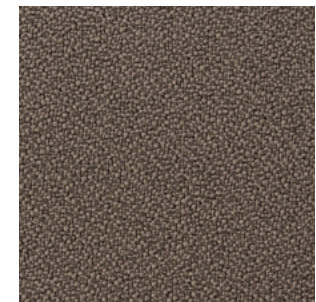
Don't use
bleach



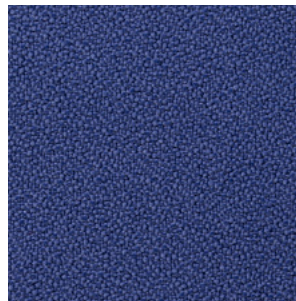
I2



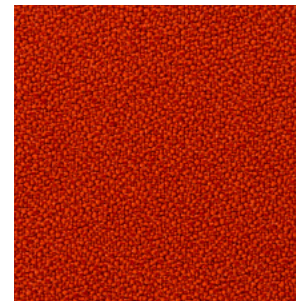
I3



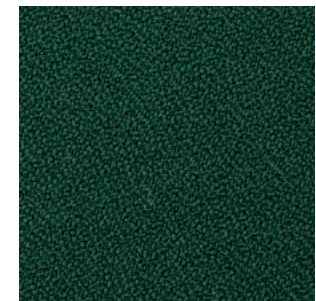
I4



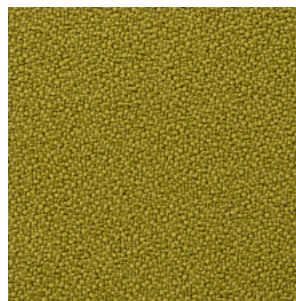
I7



I10



I11



I12



I14

Group 02 ORUGA



FROCA

Tech data sheet

Composition

100 % polyester

Width 150 cm

Seam strength

Warp: 1.8 mm / BS 3320:1988

Weft: 2 mm / BS 2543:1995

Resistance to abrasion

+70.000 (Martindale cycles)

Breaking strength

Warp: 64 N / ISO13937-3:2000

Weft: 64 N / ISO13937-3:2000

Breaking strength

Warp: 140,36 N / in ISO 13937-3

Weft: 92,62 N / in ISO 13937-3

Coulour fastness to light

4 / ISO 105 B02:1994

Rubbing Solvents

4-5 / ISO 105X12:2001

Rubbing fastness in humid state

4 / ISO 105X12:2001

Pilling resistance

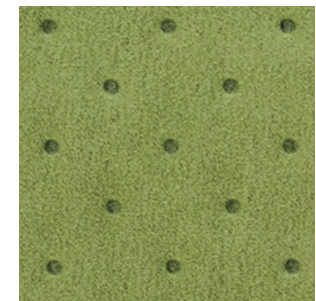
4-5 / ISO 12945-2



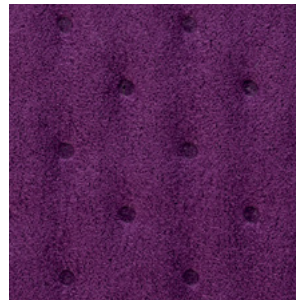
02



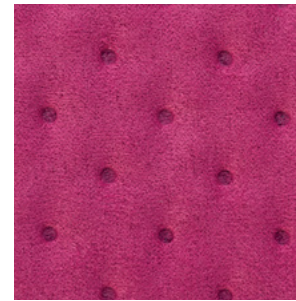
04



09



010



011



012



015



Wash in dry



Anti-stain
finish



Avoid drying
in the sun



Don't use
bleach

Group 02 NILO



VERY IMPORTANT!



Light colors and white are excluded from warranty due to color transmission from external fabrics (jeans, dyed clothes, etc.).

FROCA

Tech data sheet

Composition

Surface: 100% polyurethan
Base: 70% polyester / 30 % cotton

Width 140 cm/ 54 in +/- 2cm

Resistance to abrasion
+100.000 (Martindale cycles)

Breaking strenght
Warp: 7254,6 N / A in ISO 13937-3
Weft: 46,7 N / A in ISO 13937-3

Breaking strenght
Warp: 54,6 N / A in ISO 13937-3
Weft: 92,62 N / A in ISO 13937-3

Coulour fastness to light
> 5 / A EN ISO 105-B 02

Rubbing Solvents
5: A EN ISO 105-X12

Rubbing fastness in humid state
5: A EN ISO 105-X12

Pilling resistance
ISO/DIS 12945-2

Treatment Azo
Undetectable

Anti hidrolisis
Jungle test 3 years

Inflammability
EN 1021-1 & 2
Will also pass other flammability standards. Flame retardant performance is dependent upon the foam used.



Cigarette test



Match test



Wash in dry



Avoid drying in the sun



Don't use bleach



Anti hidrolisis



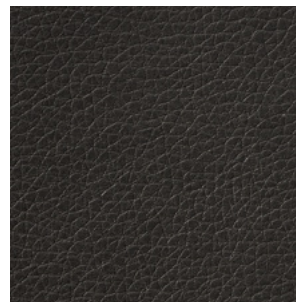
Ecologic



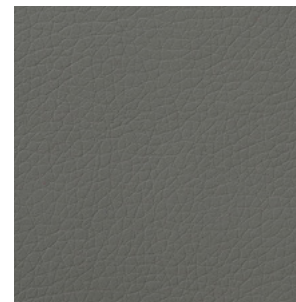
Antiallergic



Without chemical products



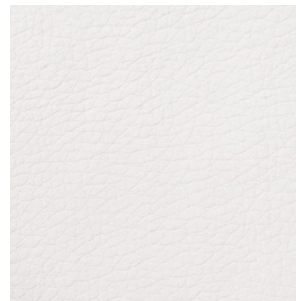
NL1



NL7



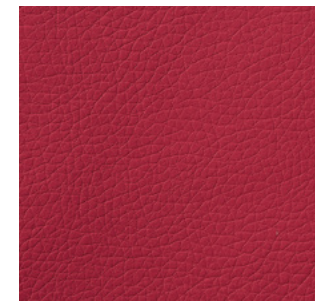
NL9



NL12



NL15



NL33



NL39



NL43

Group 02 MADISON



FROCA

Tech data sheet

Composition

80 % pes. / 20 % cot.

Width 140 cm/ 54 in

Seam strength

Warp: 1.8 mm / BS 3320:1988

Weft: 2 mm / BS 2543:1995

Resistance to abrasion

+ 30.000 (Martindale cycles)

Breaking strength

Warp: 729,0 n/18,1% Cat. A in ISO 13934-1

Weft: 687,0 n/29,9% Cat. A in ISO 13934-1

Breaking strength

Warp: 140,36 N / in ISO 13937-3

Weft: 92,62 N / in ISO 13937-3

Colour fastness to light

>5 / UNE 40187 / BS 1006-B02

Rubbing Solvents

5: ISO 105-D01 / UNE 40099

Rubbing fastness in humid state

5: ISO 105-C06 / UNE 40029

Pilling resistance

ISO/DIS 12945-2



MA1



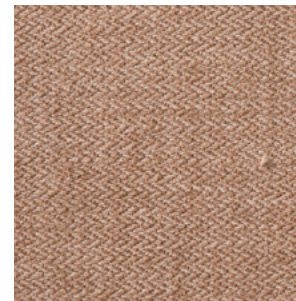
MA3



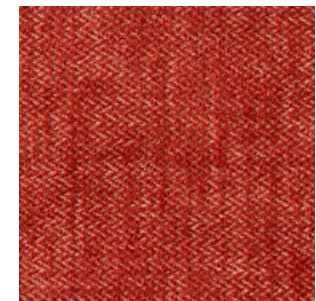
MA4



MA6



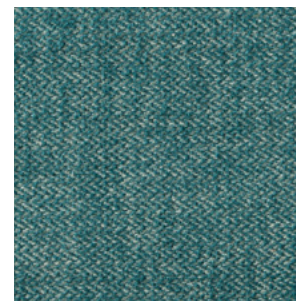
MA12



MA17



MA19



MA20



Wash with
wet cloth



Avoid drying
in the sun



Don't use
bleach

Group 02 TONAL



Gabriel®

Tech data sheet

Composition

100% recycled polyester

Width 140 cm/ 55 in

Weight 315 g/m²

Resistance to abrasion

+ 100.000 (Martindale cycles) ISO 12947-2/14465

Resistance to abrasion wyzenbeek (ASTM D4157-07)

(severe use)+100.000 (Martindale cycles)

Pilling resistance

UNE-EN ISO 12945-2:2001 4/5

Colour fastness to light

UNE-EN ISO 105-B02.

Scale 1-8; 6-8

Fastness to Rubbing

Dry : UNE-EN ISO / 105-X122003 4/5

Wet: UNE-EN ISO 105-X122003 4/5

Acoustic test air flow resistance

EN 29053 & ISO 9053-1

Colour fastness to light

UNE-EN ISO 105-B02 method 2

Colour fastness to perspiration

AATCC 15. Scale 1-5; 5 ; BS EN ISO 105-E04

Breaking strenght

ASTM D4034; BS EN ISO 13936-2

Dry cleaning fastness

BS EN ISO 6330 4M 40 C PC

Inflammability

UE: EN 1021-1:2006 (cigarette) EN 1021-2:2006

(match); UK: BS 5852:2006 (cigarette and match);

BS 5852:2006 Crib 5; BS 7176:2007 Medium Hazard;

DIN 4102-1:1998 clasificación B1; NF P92-503:2004

clasificación M.3; Class Uno UNI 8456 UNI 9174; CA

TB 117-2013



Cigarette
test



Match test



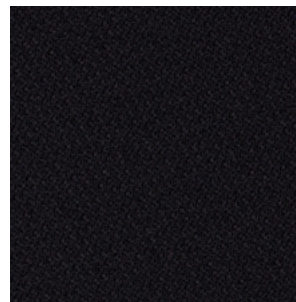
Wash in dry



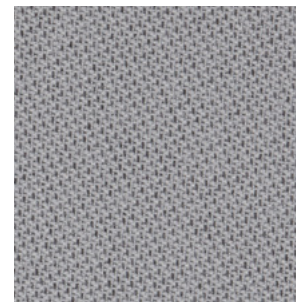
Avoid drying
in the sun



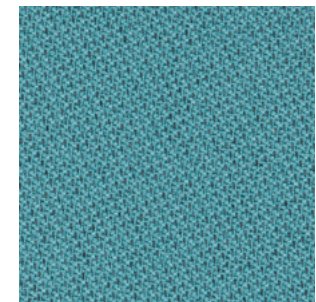
Don't use
bleach



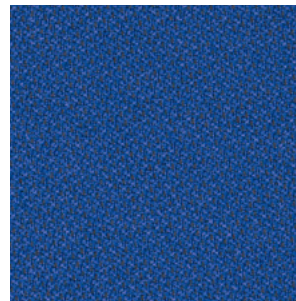
T01



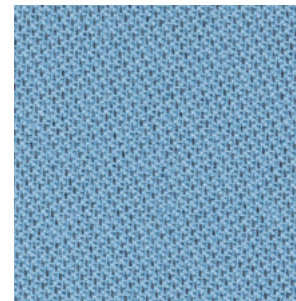
T02



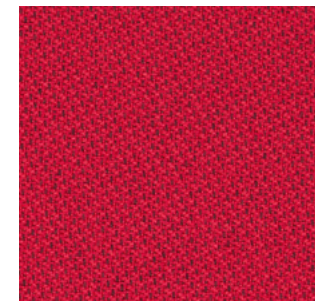
T03



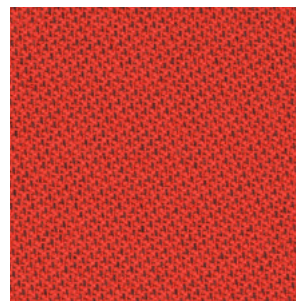
T04



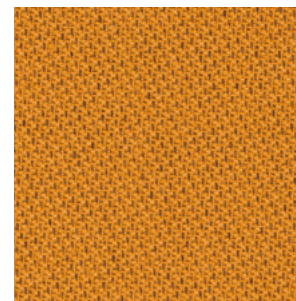
T05



T06



T07



T08

Group 02 ONE



FIDIVI*

Tech data sheet

Composition

100% recycled polyester

Width 150 cm/ 59 in

Resistance to abrasion

+ 100.000 (Martindale cycles) ISO 12947-2

Colour fastness to light

>6 / ISO 105-B02 (Xenotest)

Fastness to Rubbing

Dry : UNE-EN ISO / 105-X122003 4/5

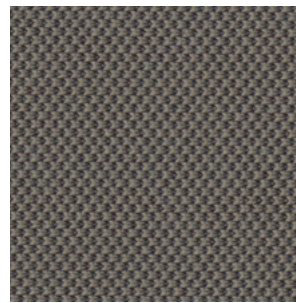
Wet: UNE-EN ISO 105-X122003 4/5

Pilling resistance

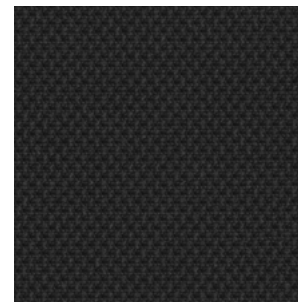
ISO 12945-2; Scale 1-5; 5

Inflammability

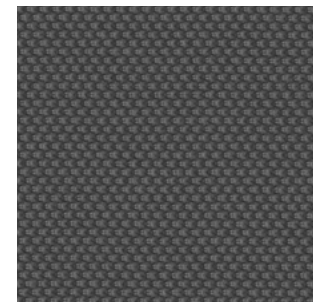
UE: EN 1021-1:2006 (cigarette) EN 1021-2:2006 (match)



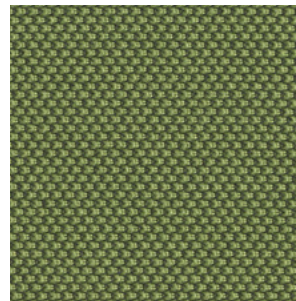
ON1



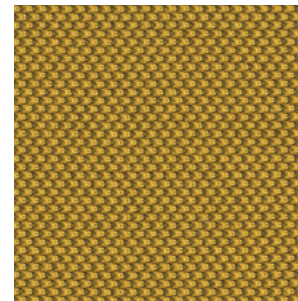
ON2



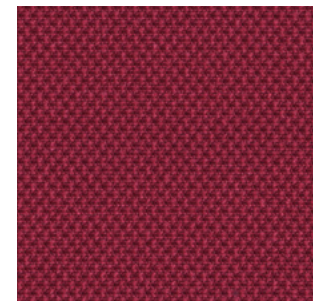
ON3



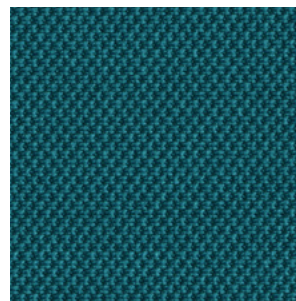
ON4



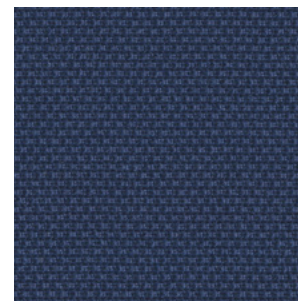
ON5



ON6



ON7



ON8

Group 03 VALENCIA



VERY IMPORTANT!



Light colors and white are excluded from warranty due to color transmission from external fabrics (jeans, dyed clothes, etc.).

SPRADLING®

Tech data sheet

Composition

100% polyester

Width 137 cm - ISO 2286-1

Resistance to abrasion

+ 300.000 (Martindale cycles) ISO 12947-2

Breaking strength

ISO 4674-1 MB NEWTON (MIN.)

Warp: 29 N / Weft: 25 N

Fastness to Rubbing

Dry: UNE-EN ISO 105-X12:2003 4/5

Wet: UNE-EN ISO 105-X12:2003 5

Couleur fastness to light

DIN 54004 / NTC 1479 Blue wool Cal \geq 7 1,000 Hours

Tensile strenght

ISO 1421 M1 NEWTON / MIN

Warp: 405 N / Weft: 198 N

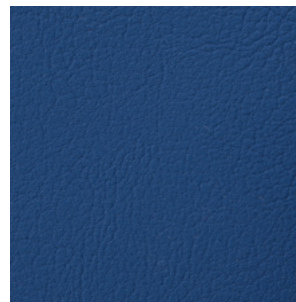
Inflammability

FMVSS 302, IMO Res. MSC.307(88) - (2010 FTP Code) Annex 1 Part 8; FAR 25.853 (A) Appendix F Part. I(a)(1)(ii);

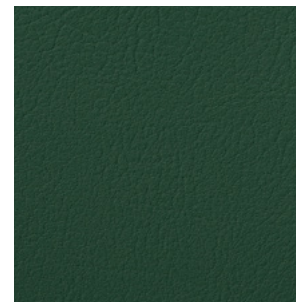
UNE 23.727 90: M2; EN 1021 PARTE 1 & 2;

DIN 4102 (B2); ÖNORM B 3825; ÖNORM B 3800 Teil 1; CALIFORNIA T.B. 117-2013; UFAC Fabric - Class I;

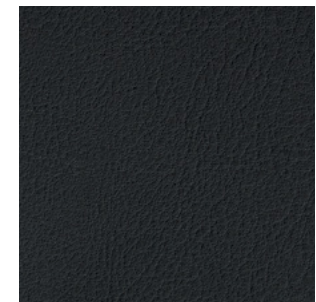
NFP 92.503: M2; EN 71-2; UNI 9175: 1.IM;ECE R118



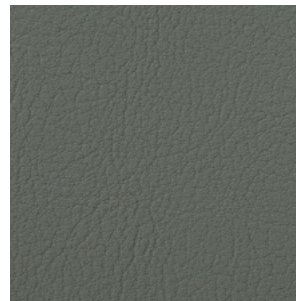
VA5



VA6



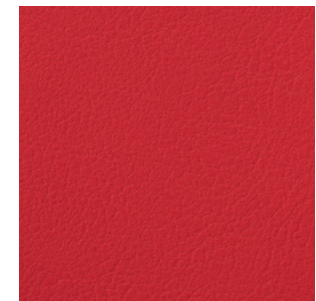
VA11



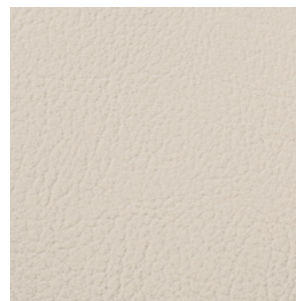
VA14



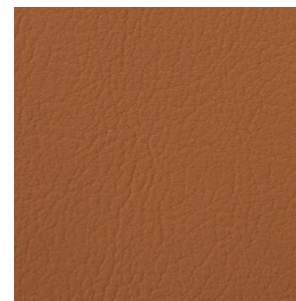
VA15



VA16



VA21



VA22



Cigarette test



Match test



Wash in dry



Avoid drying in the sun



Don't use bleach



Waterproof



Antistatic



Antibacterial



Antiallergic



Without chemical products

Group 03 DEKORA



exit
fabrics.

Tech data sheet

Composition

100% Polyolefin

Width 140 cm/ 54 in ± 2%

Resistance to abrasion

UNE-EN 14465:2004+A1:2007

Annex A to based on UNE-EN ISO 12947-2:1999/
AC:2006 + 40.000 (Martindale cycles)

Breaking strenght

UNE-EN ISO 13937-3:2001

Warp: 120 N / Weft: 130 N

Fastness to Rubbing

Dry: UNE-EN ISO 105-X12:2003 4/5

Wet: UNE-EN ISO 105-X12:2003 4/5

Coulour fastness to light

UNE-EN ISO 105-B02:2001 +A1:2002 Method 2 5/6
(grade 1-8; 8 best value). Suitable for outdoor

Pilling resistance

UNE-EN 14465:2004 +A1:2007,

UNE-EN ISO 12945-2:2001 4/5

Inflammability

UK: BS 5825:2006 (cigarette)

UE: in 1021-1:2006 (cigarette)

D: DIN 66084:2003-07 classification P- c USA: CAL
TB 117:2000 Section E, part 1 (C.S. 191-53; CLASS 1)

NFPA 260:2009 Cover fabric CLASS 1; Buses: UNECE
Regulation No. 118 Annex 6 (Directive 95/28 Annex
IV) Flammability performance is dependent on foam
used.



Cigarette
test



Wash in dry



Don't use
bleach



Avoid drying
in the sun



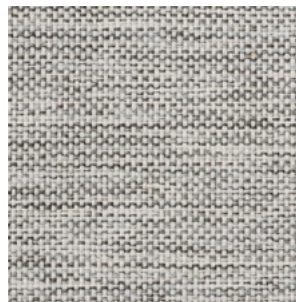
Ecologic



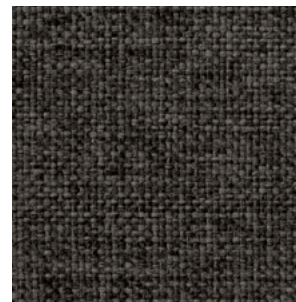
Antistatic



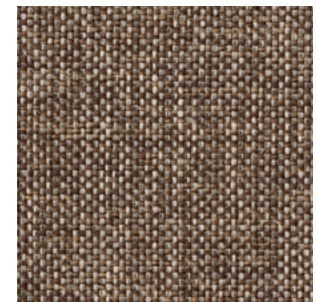
Recyclable
100%



DE1



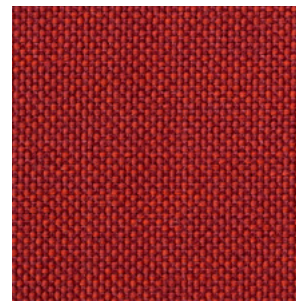
DE2



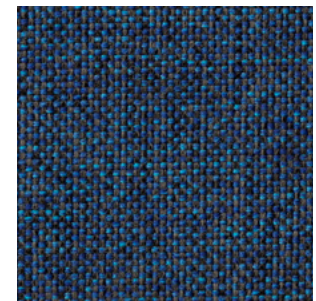
DE3



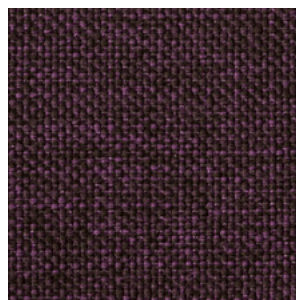
DE4



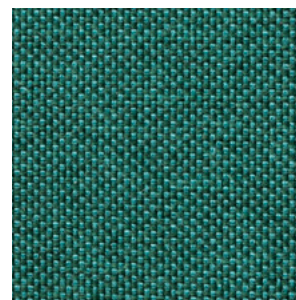
DE5



DE6



DE7



DE8

Group 03 FELICITY



Gabriel

Tech data sheet

Composition

100% recycled polyester

Width 140 cm/ 55 in

Weight 430 g/m²

Resistance to abrasion

+ 90.000 (Martindale cycles) ISO 12947-2/14465
Resistance to abrasion wyzenbeek (ASTM D4157-07) (severe use) +100.000 (Martindale cycles)

Pilling resistance

UNE-EN ISO 12945-2:2001
Scale 1-5; 5

Coulour fastness to light

UNE-EN ISO 105-B02.
Scale 1-8; 5-7

Fastness to Rubbing

Dry: UNE-EN ISO / 105-X122003 4/5
Wet: UNE-EN ISO 105-X122003 4/5

Acoustic test air flow resistance

EN 29053 & ISO 9053-1d

Coulour fastness to light

UNE-EN ISO 105-B02 method 2

Colour fastness to perspiration

AATCC 15. Scale 1-5; 5 ; BS EN ISO 105-E04

Breaking strenght

ASTM D4034; BS EN ISO 13936-2

Rubbing Solvents

BS EN ISO 6330 4M 40 C PC

Inflammability

UE: EN 1021-1:2006 (cigarette) EN 1021-2:2006 (match) ; UK: BS 5852:2006 (cigarette and match); BS 5852:2006 Crib 5; BS 7176:2007 Medium Hazard; DIN 4102-1:1998 clasificación B1; NF P92-503:2004 clasificación M.3; Class Uno UNI 8456 UNI 9174; CA TB 117-2013



Cigarette
test



Match test



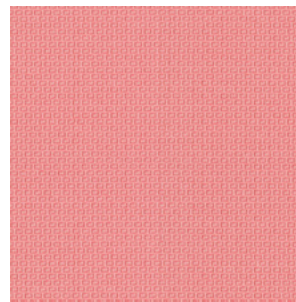
Wash in dry



Avoid drying
in the sun



Don't use
bleach



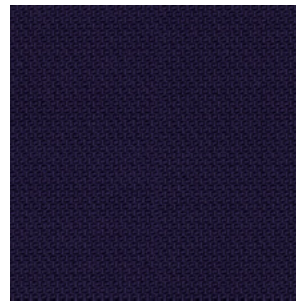
FE1



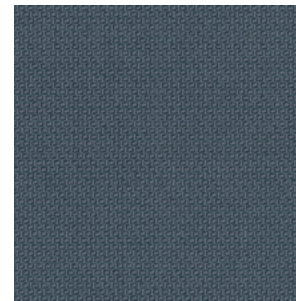
FE2



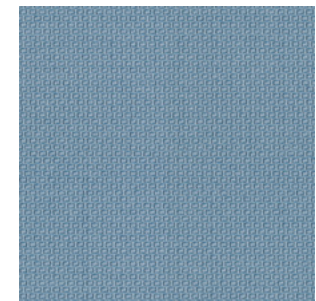
FE3



FE4



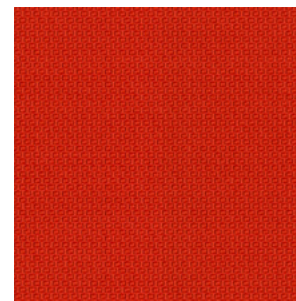
FE5



FE6



FE7



FE8

Group 04 LEATHER



VERY IMPORTANT!

Light colors and white are excluded from warranty due to color transmission from external fabrics (jeans, dyed clothes, etc.).

Tech data sheet

Composition

100% Bovine Leather

Tannerie By chrome

Tannerie By Passes

Finish Pigmented

Engrave Madras

Tannerie By Passes

Medium size

ca. 4 m2. Aprox.

Average Thickness

ca. 0.9 - 1 mm.

Flexometry

20.000 iuf/20

Fastness to Rubbing

Dry: 500 iuf 450

Wet: 100 iuf 450

Ph value min. 3,5 din 53312



Wash with
wet cloth



Avoid drying
in the sun



Don't use
bleach



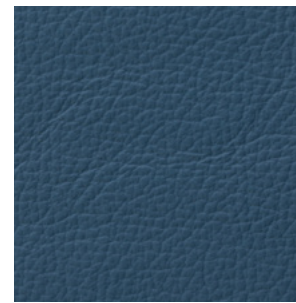
CFC Free



Pentaclorofenol
free



F1



F2



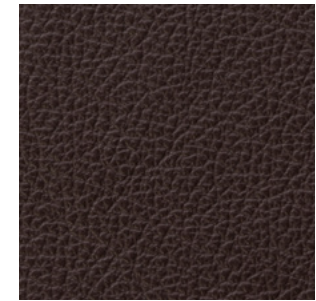
F3



F6



F8



F14



F18



F20

Equis back SPAZIO



FIDIVI*

Tech data sheet

Composition

100% recycled polyester

Width 140 cm/ 54

Resistance to abrasion

+ 50.000 (Martindale cycles) ISO 12947-2

Coulour fastness to light

>6 / ISO 105-B02 (Xenotest)

Fastness to Rubbing

Dry : UNE-EN ISO / 105-X122003 4/5

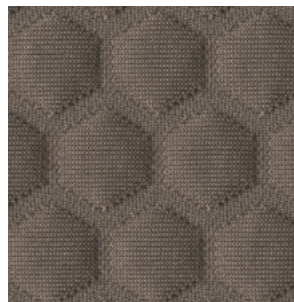
Wet: UNE-EN ISO 105-X122003 4/5

Pilling resistance

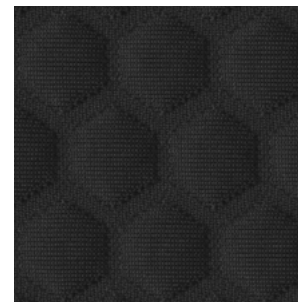
ISO 12945-2; Scale 1-5; 5

Inflammability

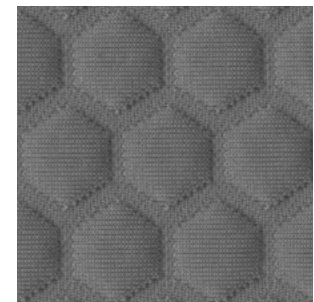
UE: EN 1021-1:2006 (cigarette) EN 1021-2:2006 (match)



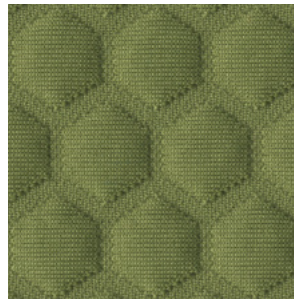
SP1



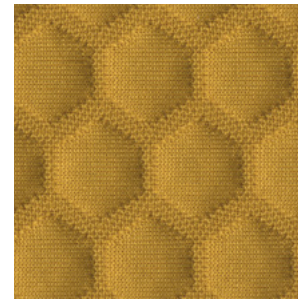
SP2



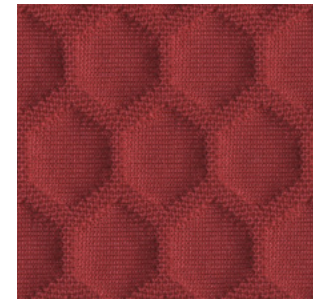
SP3



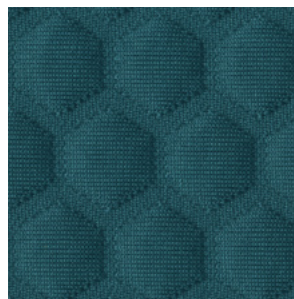
SP4



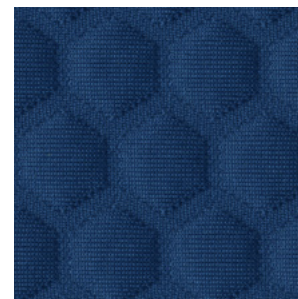
SP5



SP6



SP7



SP8



dileoffice.com